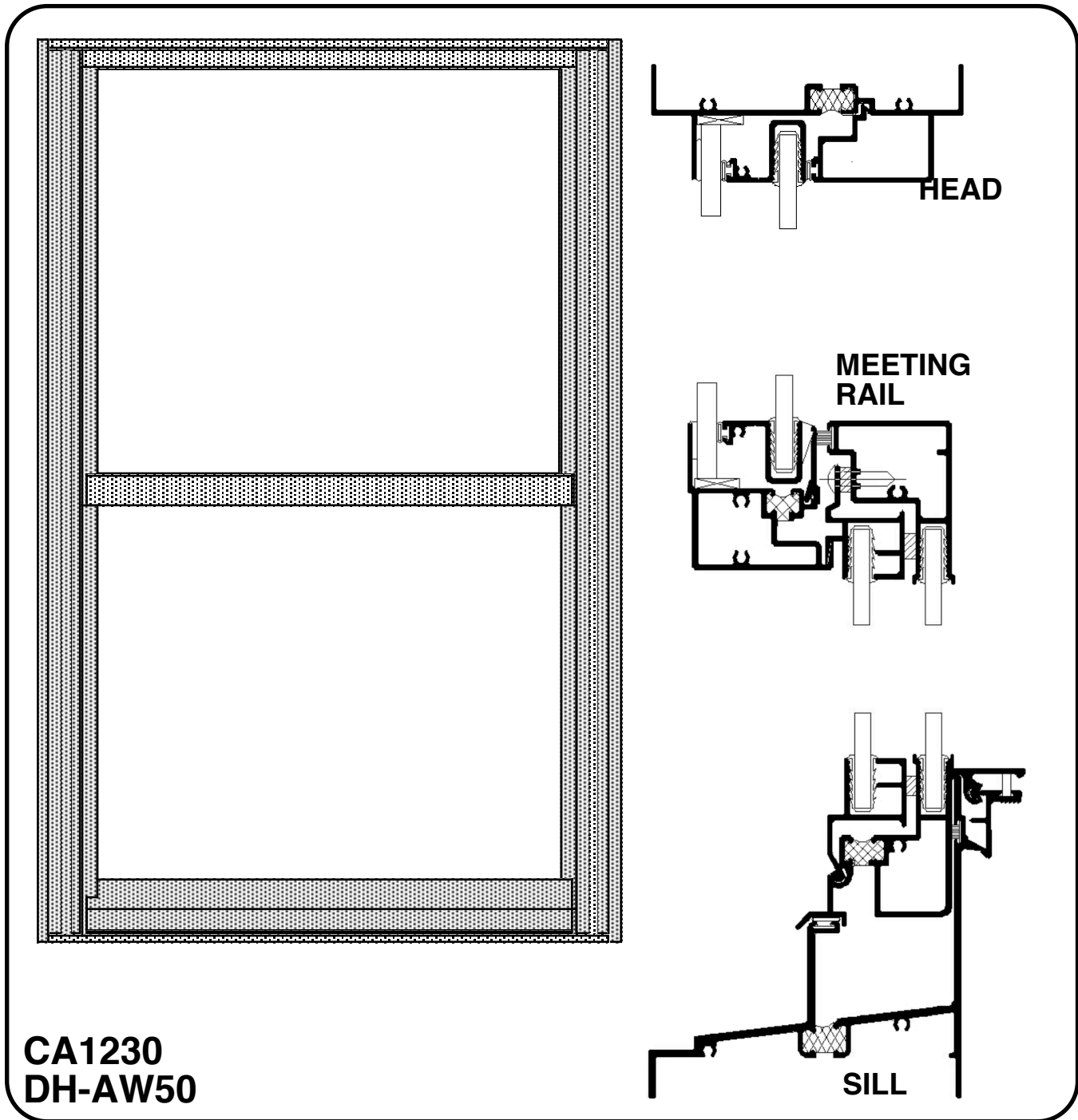


eritage Window and Door, Inc.

6141 Casmere, Detroit, MI 48212

Phone (313) 893-2000, FAX (313) 893-2007



**CA1230
DH-AW50**

Thermally Broken, Double or Single Hung Vandal Sash Tilt Window

MODEL CA1230 SPECIFICATIONS

Description

Thermally broken, Monumental, Double or Single Hung Vandal Sash Tilt window.

Application

This thermally broken double/single hung is designed for institutional buildings, and schools, where resistance to glass breakage is required.

Special Features

Dual glazed with 2 independantly glazed panes.
Tilit and take out sash. single hung fixed sash removable.
Historic applied muntin available between glazing.

Construction

Nominal wall thickness .062" (.093" sill)6063 T-5 extruded aluminum with integral poured-in-place thermal barrier. All horizontal rails shall be of tubular construction. Joinery shall be butted and coped with stainless steel screws into integral screw ports, Sash shall be telescoped for additional strength.

Glazing

Dual Glazed with 2 individual panes.
Individual panes may be up to 1/4" thick.
We recommend GE MR10 Lexan®.

Finishes

Standard: Bronze powdercoat, clear or bronze anodized.
Optional: Custom powdercoat or Duranar® finishes available, special order only

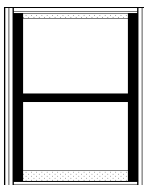
Hardware

Zinc tilt latches with maintenance-only operators. White bronze sweep locks (white bronze sill lock available).
Spiral or block and tackle balances standard. (Ultra-Lift® balances available - special order)

Accessories

A full line of standard and historic panns and trims available, receptors and mulls available.

**For more information, contact your Heritage Window and Door, Inc.
sales representative**



**Heritage Window and Door, Inc.
6141 Casmere, Detroit, MI 48212
Ph (313) 893-2000; FAX (313) 893-2007**