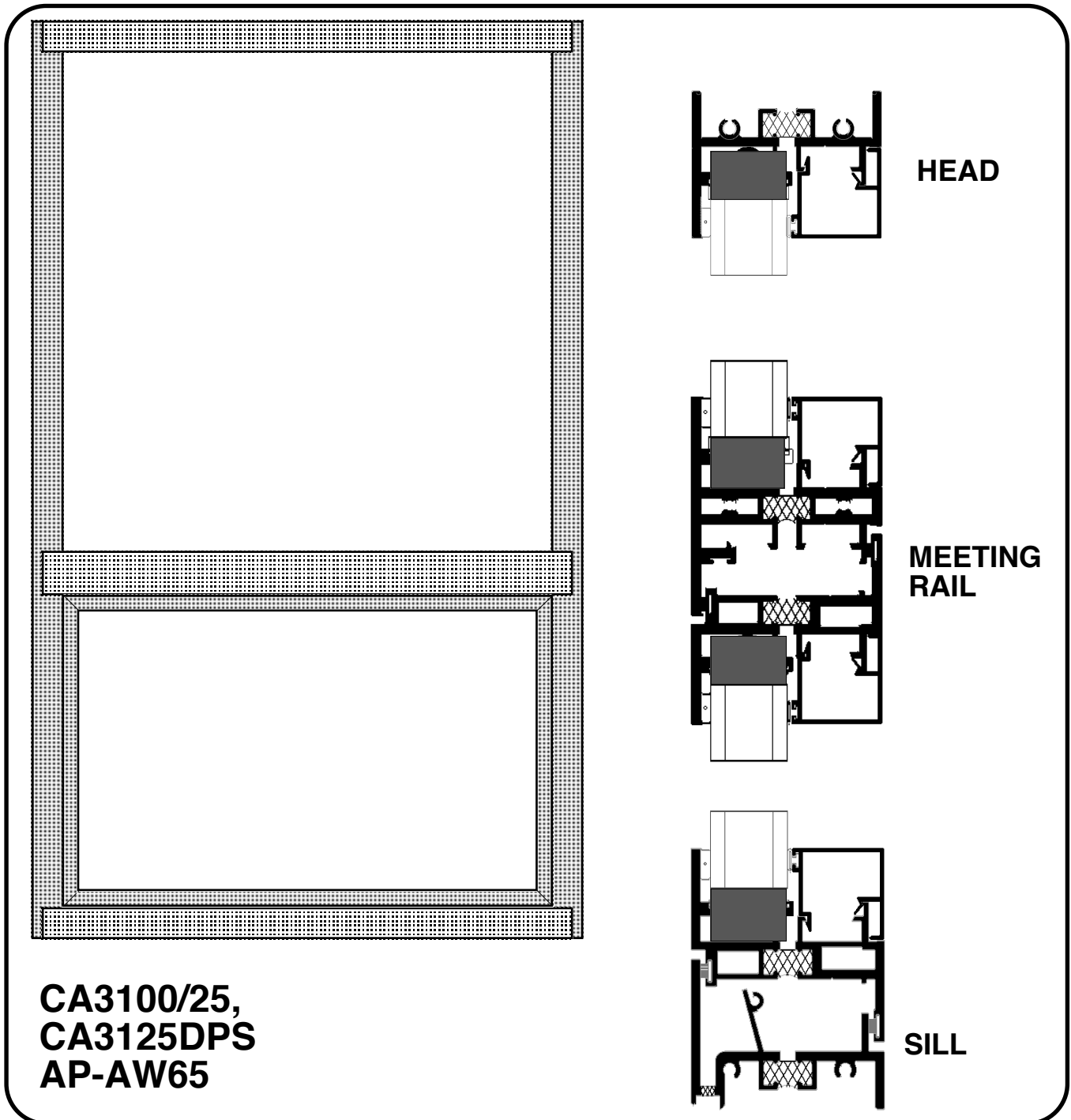


eritage Window and Door, Inc.

6141 Casmere, Detroit, MI 48212

Phone (313) 893-2000, FAX (313) 893-2007



**CA3100/25,
CA3125DPS
AP-AW65**

Thermally Broken, Monumental, Projected Vent Window

PRESERVING AMERICA'S WINDOW HERITAGE

MODEL CA3100 SPECIFICATIONS

Description

Thermally broken, Monumental, Flush face, Projected vent window.

Application

This thermally broken vent is designed for institutional buildings, schools, high-rise buildings, hospitals and office buildings .

Special Features

Some of our special features include:
Flush face construction, screen subframe that prevents exterior removal and obviates the need for wickets on many configurations, Equal sightline version available (CA3200), Historic decorative muntin (CA3115) and true muntin (CA3180) available.

Construction

Nominal wall thickness .125" 6063 T-5 extruded aluminum with integral poured-in-place thermal barrier. All vent members shall be of tubular construction. Vents shall present a flush profile with the mainframe. Vent joinery shall be mitre-cut with hydraulically crimped corner keys, frame joinery shall be butted and coped with stainless steel screws into integral screw ports.

Glazing

Standard: Unglazed, Prepared for 1" glass
Optional: Factory glazed with 1" sealed glass or up to 1.75" insulated panel. Also available with vandal resistant dual glazing (CA3125, CA3125DPS) Model CA3125DPS has minimum 3/4" edge engagement for Lexan®

Finishes

Standard: Bronze acrylic enamel, clear or bronze anodized.
Optional: Custom enamel or Kynar® finishes available - special order only.

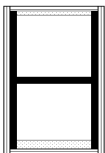
Hardware

4 bar stainless steel hinges, white bronze cam handles
Push or Roto operators available on casements, maintenance-only latches available - special order only.

Accessories

Panning, trims, receptors and mulls available.

**For more information, contact your Heritage Window and Door, Inc.
sales representative**



Heritage Window and Door, Inc.
6141 Casmere, Detroit, MI 48212
Ph (313) 893-2000; FAX (313) 893-2007

