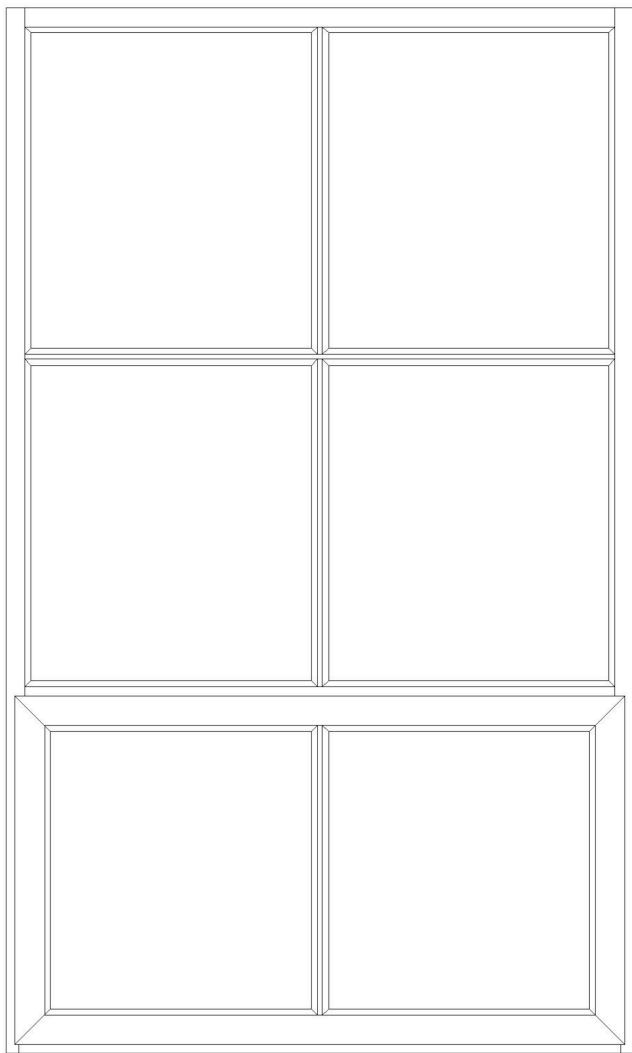


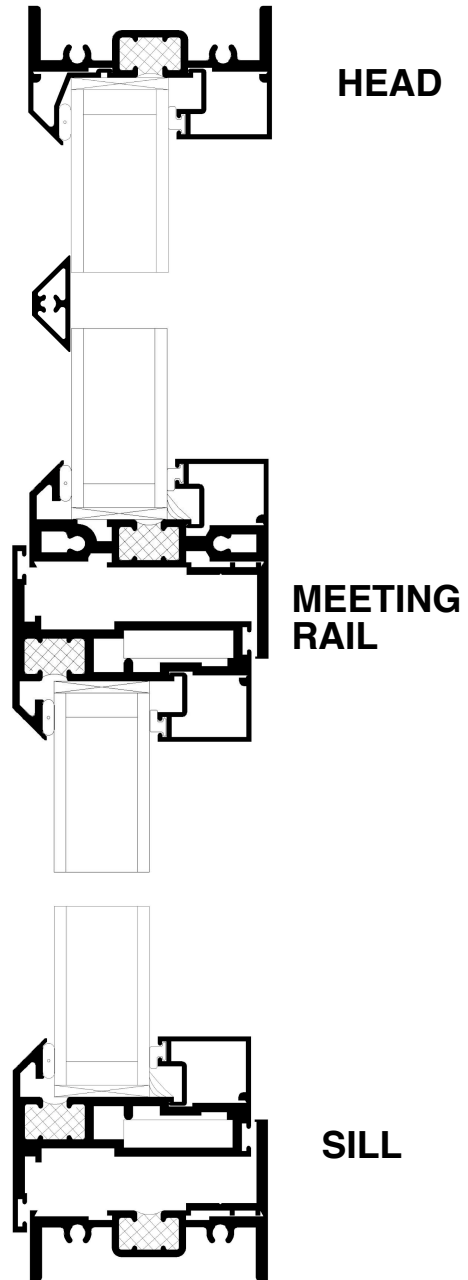
eritage Window and Door, Inc.

6141 Casmere, Detroit, MI 48212

Phone (313) 893-2000, FAX (313) 893-2007



CA3260



Thermally Broken, Historic, Projected Vent Window
PRESERVING AMERICA'S WINDOW HERITAGE

MODEL CA3260 SPECIFICATIONS

Description

Thermally broken, Historic, Projected vent window.

Application

This thermally broken vent is designed to accurately replace steel sash with a modern insulated window.

Special Features

Some of our special features include:

Industry leading narrow profiles, eg 1 7/16" at the fixed perimeter, 2 9/16" at vent perimeter, 2 15/16" at the transition from vent to fixed.

Four different applied Muntin profiles (3/4", 1" 1 1/2" and 2") that provide the appearance of original steel muntins.

Beveled perimeter to accurately replicate outside putty-glazed steel sash.

Construction

Nominal wall thickness .125" 6063 T-5 extruded aluminum with integral poured-in-place thermal barrier. All vent members shall be of tubular construction. Vent joinery shall be mitre-cut with hydraulically crimped corner keys, frame joinery shall be butted and coped with stainless steel screws into integral screw ports.

Glazing

Standard: Factory glazed with 1" sealed glass.

Optional: 1" panel.

Finishes

This custom product is special order only and is available with Powdercoat paint; anodized or Kynar® finishes.

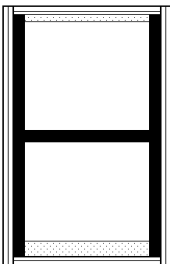
Hardware

4 bar stainless steel hinges, white bronze cam handles.

Accessories

Panning, trims, receptors and mulls available.

**For more information, contact your Heritage Window and Door, Inc.
sales representative**



Heritage Window and Door, Inc.
6141 Casmere, Detroit, MI 48212
Ph (313) 893-2000; FAX (313) 893-2007